



Alex Mustakas • Artistic Director

DRAYTON FESTIVAL THEATRE

RENTAL INFORMATION PACKAGE



Box 10, 33 Wellington St., Drayton, ON, N0G 1P0
Box Office: 519-638-5555
Toll Free: 1-855-372-9866
draytonfestivaltheatre.com

For space availability, rental estimates, reservations, technical specifications and further information on fees and schedules, please contact: **Karen De Iuliis**, Groups, Events and Rentals Manager 519-621-5511 ext. 246. karend@draytonentertainment.com

DRAYTON FESTIVAL THEATRE

ABOUT

The Drayton Festival Theatre is a renovated 1902 Opera House, boasting wonderful acoustic qualities. With its plush seating, modern elevator, upgraded washrooms and state of the art air-conditioning system, this historic theatre is one of the most comfortable and accessible of its kind in the country. We have professional staff to ensure that all your production requirements are met and that your event is a success.



THEATRE INFORMATION

House capacity: 375 seats, including wheelchair positions
Orchestra section: 245 seats
Balcony/boxes: 130 seats

The Drayton Festival Theatre is wheelchair accessible. The box office, restrooms, and refreshment area are all located on the main level.



SPECIFICATIONS

Proscenium width: 36'0"
Proscenium height: 15'0"
Total width of the stage: 45'5"
Depth of the stage: 42'0"

The Drayton Festival Theatre stage is located on the second floor of the building. The stage is a proscenium type with wings on the stage left and stage right side. The stage has a fixed grid at 16'6" above the stage floor. Grid pipes are hung at 8" centres.

There are loading doors in the stage right wing that allows access directly to the stage. Rental of a lift and operator at an additional charge is required to use these doors. There is a small elevator available to transport small, lightweight items to the orchestra level of the theatre.

The orchestra pit is located on the main level of the theatre (below the stage) and is accessed via the stage door. The orchestra pit can accommodate 20 players. Use of the audio system is required when the pit is used.

Three dressing rooms are available, accommodating up to 23 people.

TECHNICAL INFORMATION

A basic lighting plot is provided with your rental which will be hung and circuited prior to your arrival.

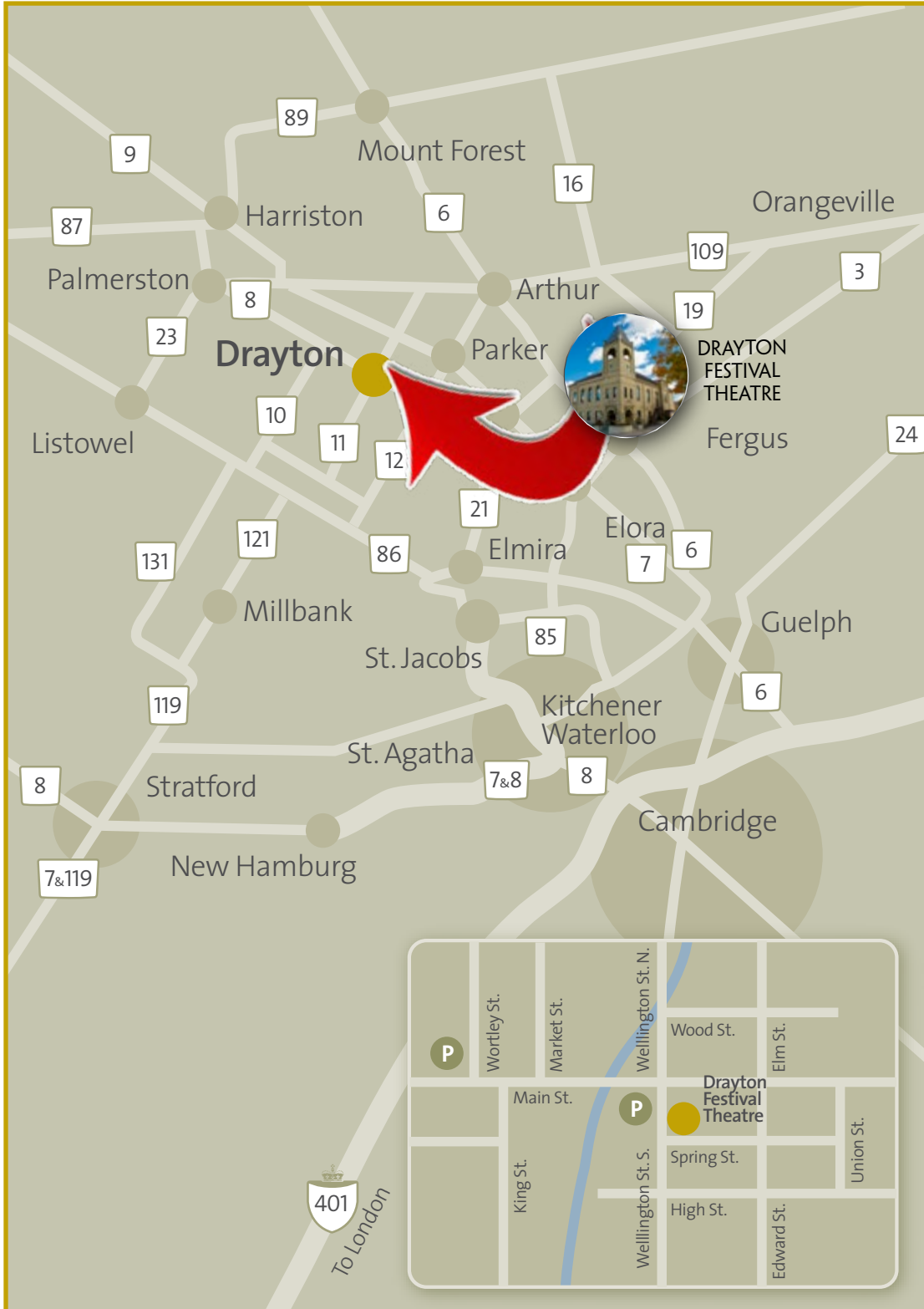
Our sound system which includes main speakers, on stage monitors, mixing console and amplifiers, is suitable for theatrical and dance presentations as well as lectures and audio-visual presentations. We can also make arrangements for the rental of microphones and other audio equipment. One of our in-house professional sound operators is required to operate the sound system at an additional charge.

BOX OFFICE

Box Office service is available to all event producers. The Box Office will accept cash, cheque, Mastercard, Visa, American Express, and Interac as payment for tickets. Ticket printing (general admission or reserved seating) includes set-up of the event in our computerized ticketing database. The Box Office is open weekdays from 9 a.m. to 5 p.m. For events on weekends or holidays, the box office will open two hours prior to the event start time. The Box Office will prepare a report summarizing all ticket sales, revenues and fees. A URL link can be supplied so that patrons can access the Box Office services online via the producer's website.

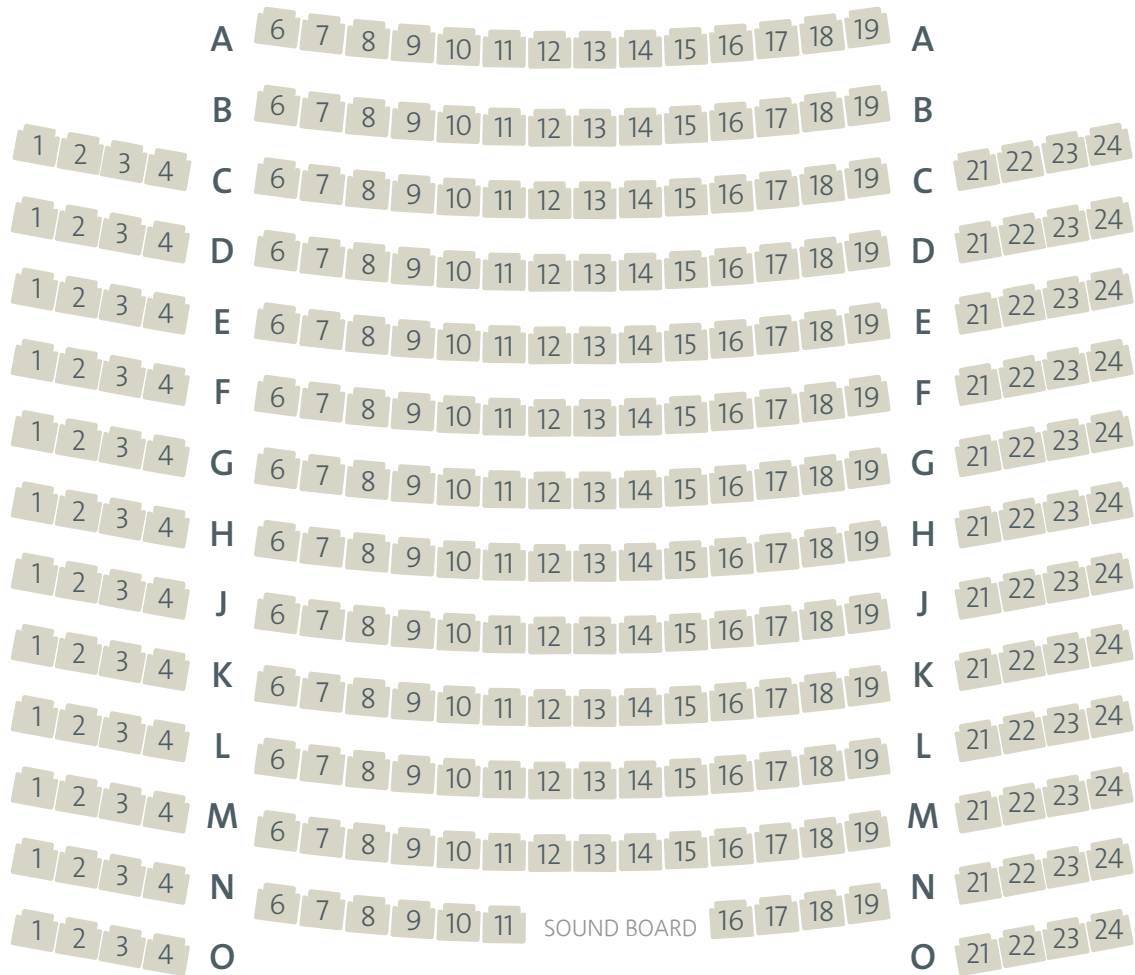
DRAYTON FESTIVAL THEATRE

LOCATION

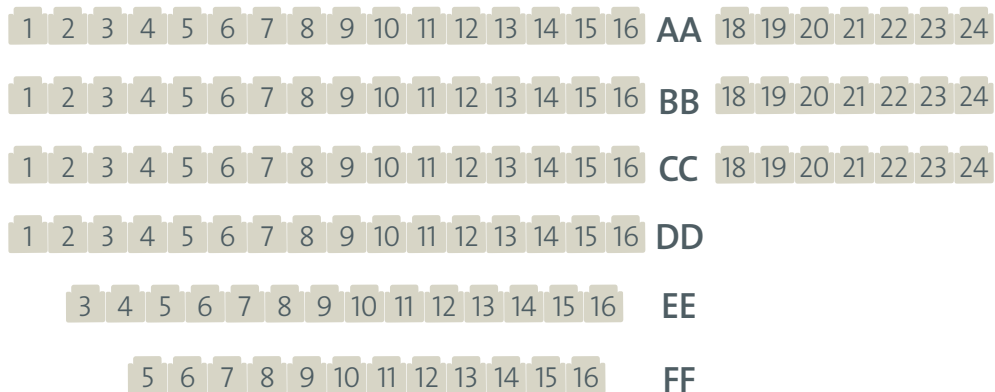


SEATING CHART

STAGE



Balcony



Free Parking



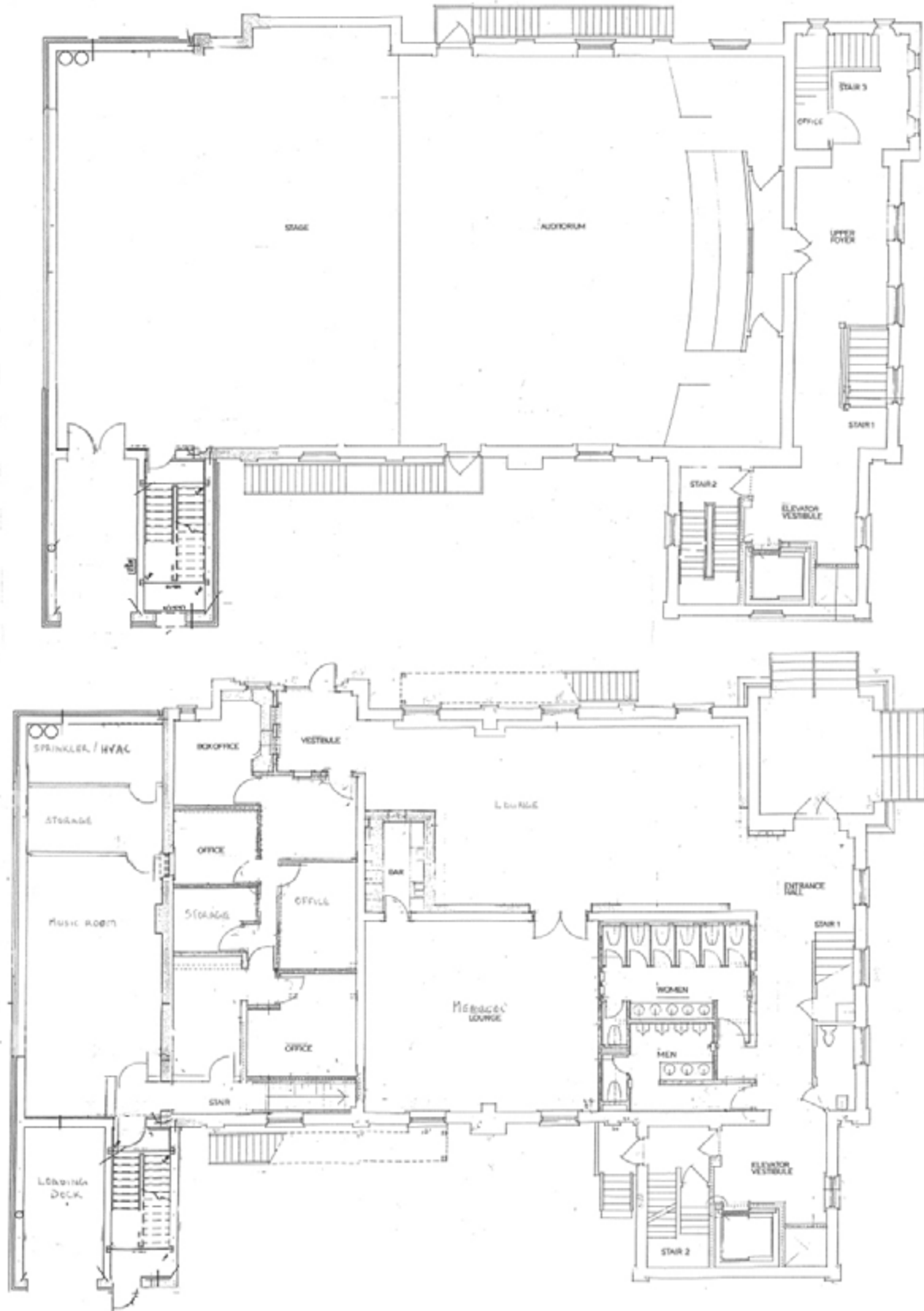
Wheelchair Accessible, Elevator to Balcony



385 Seats

DRAYTON FESTIVAL THEATRE

FLOOR PLAN



RATES INFORMATION

DAILY RENTAL RATES	COMMERCIAL	NON - PROFIT
Single performance (8 hour day)	\$1600.00	\$1100.00
Hourly rate after 8 hours	\$270.00	\$160.00

Rates do not include mandatory items such as Head Technician, House Manager and Ushers, Ticket Charges and Credit Card Fees. All amounts are subject to HST.

PERSONNEL RATES

Minimum personnel for all types of theatre public event use is as follows:

One Facilities Staff	\$40.00 per hour
	\$60.00 per hour over 8 hours, before 8:00 a.m. or after midnight
One Head Technician	\$50.00 per hour
	\$75.00 per hour over 8 hours or before 8:00 a.m. or after midnight
One Audio Technician	\$40.00 per hour
	\$60.00 per hour over 8 hours, before 8:00 a.m. or after midnight
Front of House Manager	\$150.00 per performance
Ushers	\$125.00 flat rate per performance, subject to discretion of LESSOR
Box Office Staff	\$25.00 per hour outside of normal Box Office hours

Additional staff requirements depend on each event's technical needs and projected attendance.

Technician(s)*	\$40.00 per hour
	\$60.00 per hour over 8 hours, before 8:00 a.m. or after midnight

All staffing decisions are at the discretion of Drayton Entertainment and associated costs will be guaranteed to the theatre by the event producer.

**Use of the fly system and/or the house sound mix console requires a Drayton Entertainment technician(s).*

THEATRE BOX OFFICE SERVICES

A \$1.00 per ticket surcharge will be assessed for all tickets sold or reserved through Drayton Entertainment's Box Office (including complimentary and no charge tickets). Consignment tickets printed at rate of \$0.32/ticket.

CREDIT CARD/INTERAC SURCHARGE

A 3.5% fee per credit card and interac transaction will be assessed for all credit card and interac purchases. These fees will be accounted for and deducted from the final statement with the theatre.

CAPITAL IMPROVEMENT FUND (CIF)

A \$1.00 fee per ticket CIF levee will be assessed for all tickets sold or reserved through Drayton Entertainment's Box Office (including complimentary, no charge tickets and consignment tickets).

PAYMENT SCHEDULE

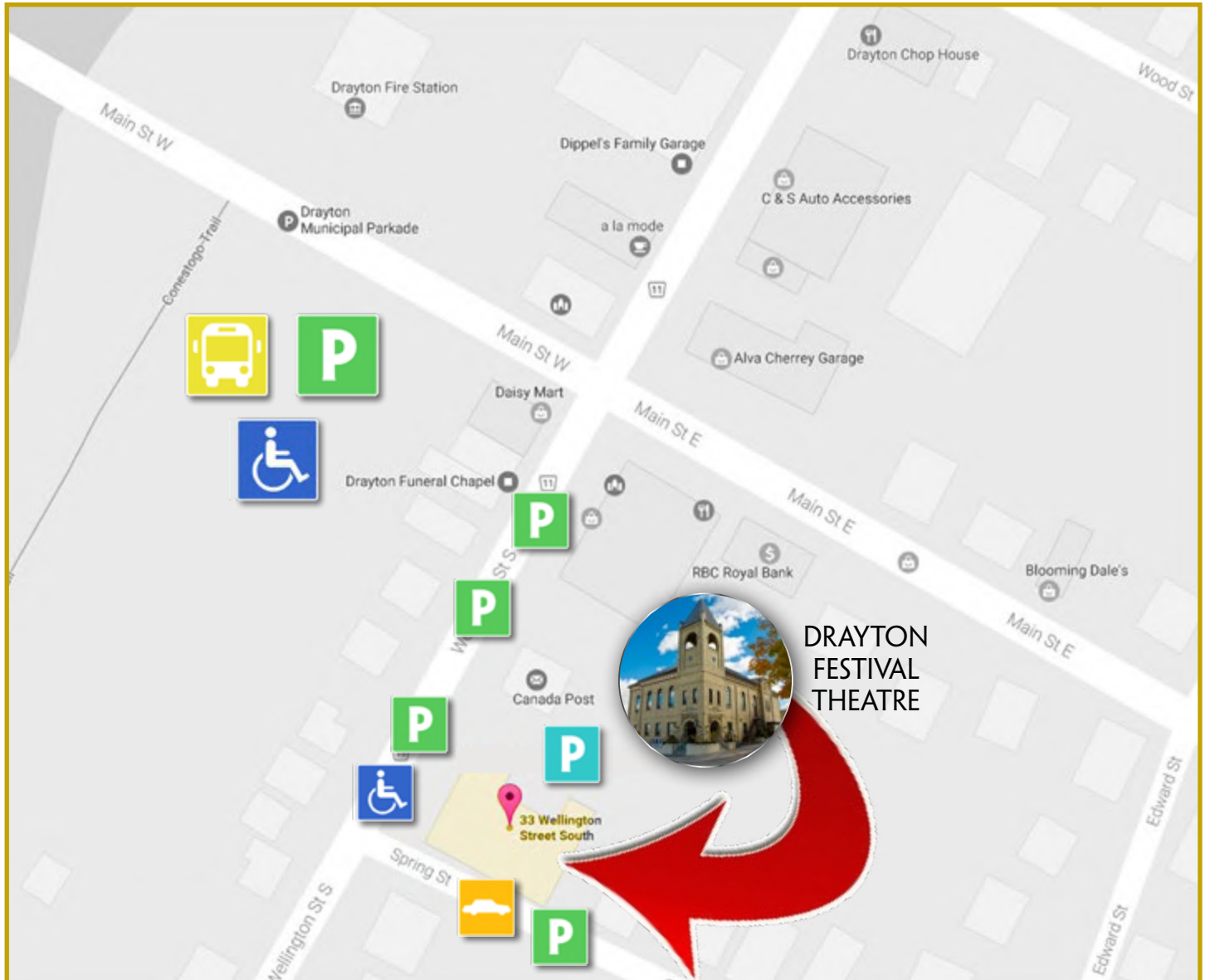
A 50% deposit is required upon signing the rental agreement. The full balance owing is due on the day and prior to the first performance or event.

For space availability, rental estimates, reservations, technical specifications and further information on fees and schedules, please contact:






Karen De Iuliis, Groups, Events and Rentals Manager
519-621-5511 ext 246 | karend@draytonentertainment.com

DRAYTON FESTIVAL THEATRE

PARKING MAP



PARKING MAP LEGEND

- | | | | |
|--|------------------------|---|--------------------|
|  | Bus Parking |  | Accessible Parking |
|  | Free Municipal Parking |  | Drop off Location |
|  | Free Theatre Parking | | |

DRAYTON FESTIVAL THEATRE

33 Wellington St. S., Drayton, ON, N0G 1P0
Box Office: 519-638-5555
Administration: 519-638-5511
Fax: 519-638-5575